

RITT ROW RETAIL

1619 WALNUT ST

RITTENHOUSE SQUARE, CENTER CITY / PHILADELPHIA, PA



SQUARE FOOTAGE (DIVISIBLE)

- 4,266 SF 1st Flr
- 4,821 SF 2nd Flr
- 4,026 SF Basement

POSSESSION

Immediate

FRONTAGE

38' 1st Flr
51' 2nd Flr

NEIGHBORING TENANTS

Apple, Jack Wills, Urban Outfitters, Free People, Alma de Cuba, BCBG Max Azria, Cole Haan, True Religion, L'Occitane & Lucky Brand Jeans

HIGHLIGHTS

- Best retail property on Philadelphia's premier shopping street
- Dramatic two-story glass facade
- Spectacular branding opportunity

FOR MORE INFO, CONTACT EXCLUSIVE AGENTS

STEVE O'MALLEY 610.834.8000 / somalley@famecoretail.com

JACKIE BALIN 215.557.0050 / jbalin@famecoretail.com

PAIGE BARROW 215.557.0050 / pbarrow@famecoretail.com

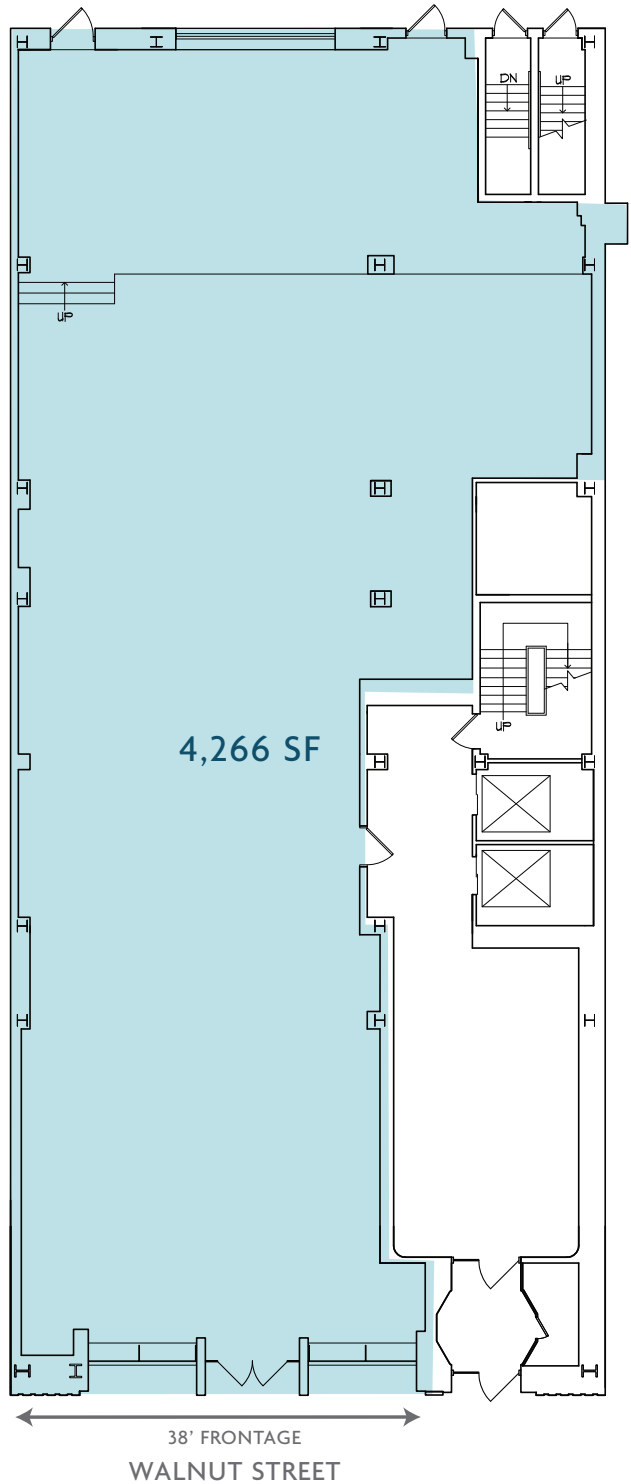
FAMECO
REAL ESTATE

1619 WALNUT ST

/ STRIP MAP - WALNUT ST



/ FLOOR PLAN - 1ST FLR



Philadelphia 1425 walnut st, suite 200 | philadelphia, pa 19102 | p 215.557.0050 | f 215.557.0053
 Plymouth Meeting 633 w germantown pk, suite 200 | plymouth meeting, pa 19462 | p 610.834.8000 | f 610.834.1793
 Woodbridge 555 us highway 1 south, suite 400 | iselin, nj 08830 | p 732.526.9100 | f 732.526.9101



All information furnished regarding property for sale, rental or financing is from sources deemed reliable, but no warranty or representation is made as to the accuracy thereof and same is submitted subject to errors, omissions, change of price, rental or other condition, prior to sale, lease or financing or withdrawal without notice. No liability of any kind is to be imposed on the broker herein.